



**21 Mile & Romeo Plank
Macomb Township**

www.aragonaproperties.com/riverpark.htm



22,528 ADT ROMEO PLANK RD

21 MILE RD

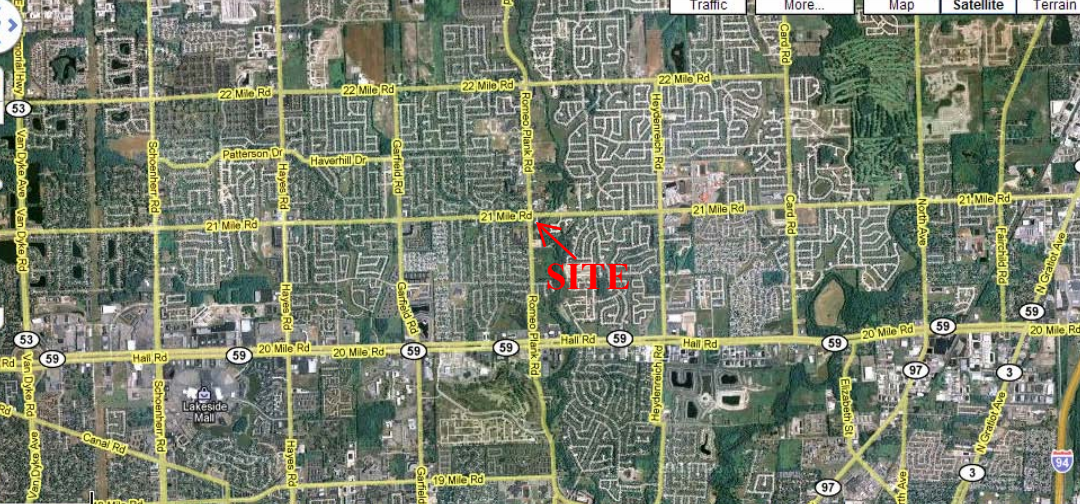
24,689 ADT

21,567 ADT

River Park Place

26,232 ADT

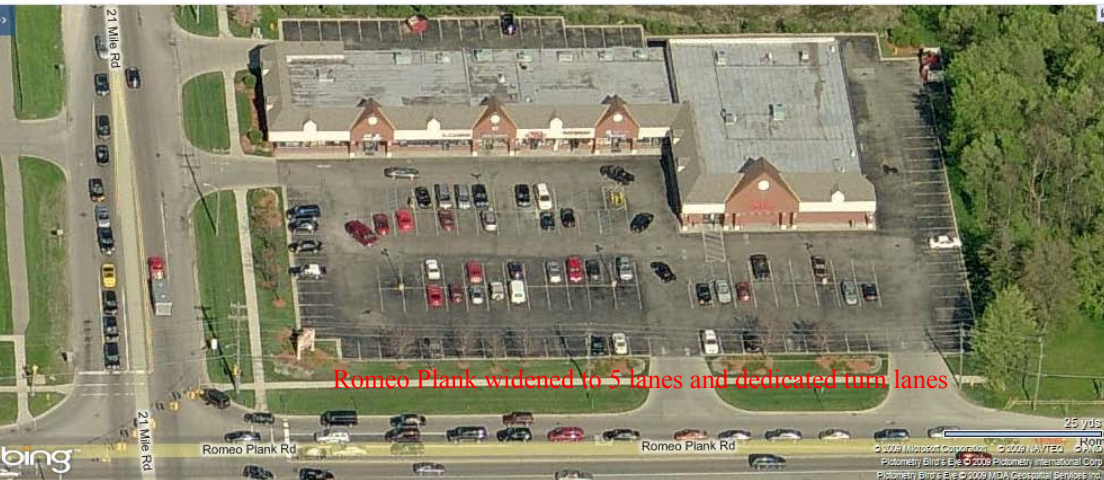
Romeo Plank widened to 5 lanes from Hall Road to 21 1/2 Mile.



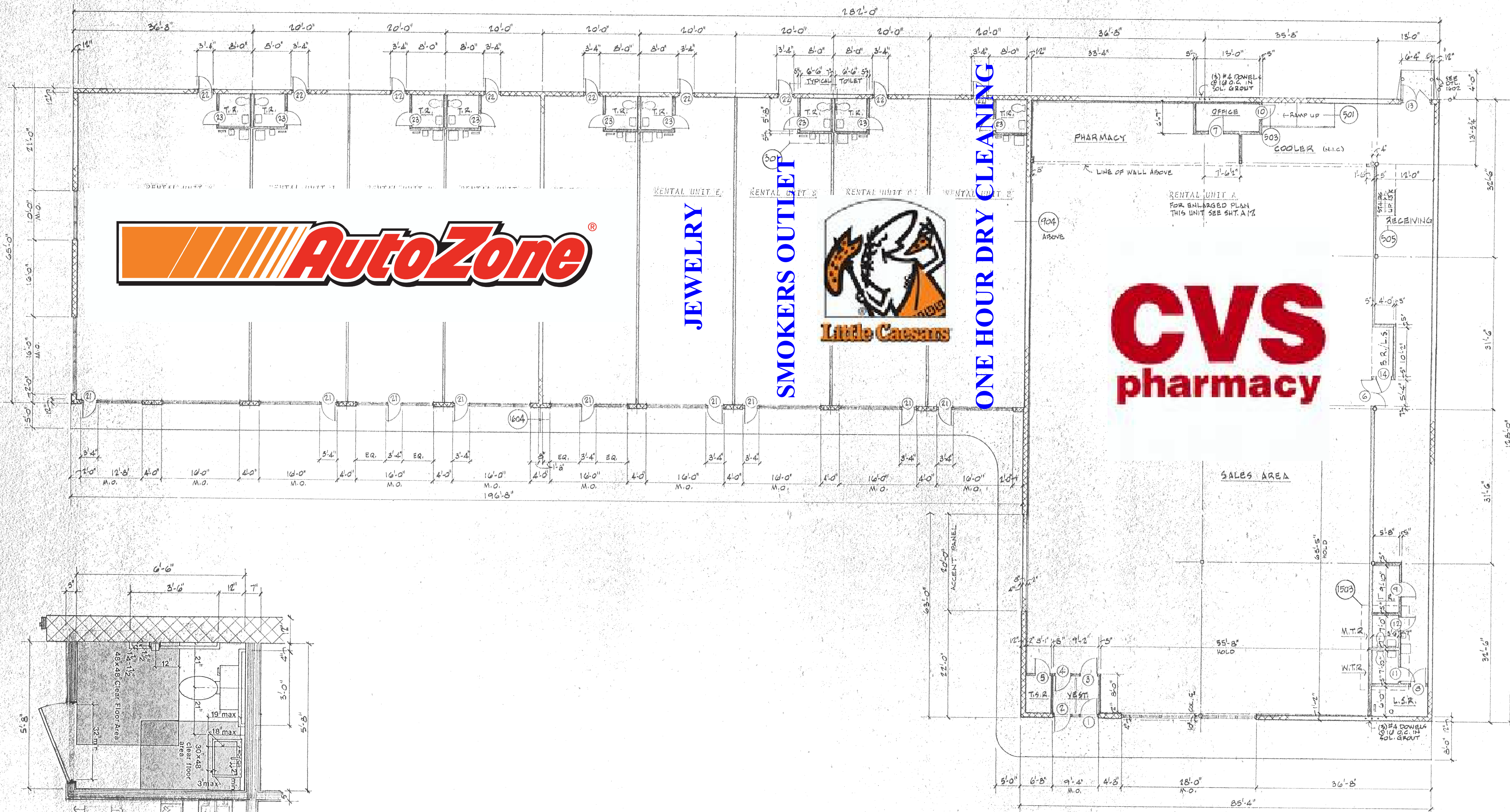
Traffic More...

Map Satellite Terrain

SITE



Romeo Plank widened to 5 lanes and dedicated turn lanes



FLOOR PLAN

FRANK J.
DeGRENDL
Associates, inc.

ARCHITECTS
PLANNERS
CONST. ADMIN.

17805 MATTSON
MT. CLEMENS,
MICHIGAN 48043
(313) 286-6373

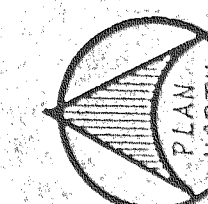
Frank J. DeGrendl
FJDA
ASSOC.

project

PROPOSED CONSTRUCTION
OF A RETAIL CENTER

RIVER PARK PLAZA
southeast corner of
ROMEO PLANK ROAD and
TWENTY-ONE MILE ROAD

602:
ROBINSON INVESTMENTS
50495 CORPORATE DRIVE
SUITE 112
UTICA, MI. 48315
313/1 254-8500



project number

91094

DO NOT SCALE DRAWINGS
USE DIMENSIONS

unless otherwise noted
scale 3/32" = 1'-0"

date OCTOBER 31, 1991

drawn G.R.

checked

approved

issued for date

DESIGN DEVELOP. 11/29/91

BLDG. PERMIT 2/20/92

ADD. #1 REV. 3/27/92

sheet

A3

Macomb County

Community	Population			Race								Age		Housing units	
				White		Black		Asian		Hispanic		Under 18			
	2000	2010	Change	2000	2010	2000	2010	2000	2010	2000	2010	2000	2010	Occupied	Vacant
Macomb County	788,149	840,978	6.7%	91.6%	83.9%	2.7%	8.6%	2.1%	6%	1.6%	2.3%	24.1%	23%	93%	7%
Ash Twp.	7,610	7,783	2.3	95.9	95.3	0.3	0.7	0.2	0.4	1.7	2	27.5	22.5	93.6	6.4
Armada Twp.	5,246	5,379	2.5	97.1	96.7	0.1	0.3	0.1	0.3	1.5	1.8	29	24.7	95	5
Armada	1,573	1,730	10	96.4	95.9	0.2	0.3	0.1	0.1	1.7	2.6	29.2	27.9	92.5	7.5
Bruce Twp.	8,158	8,700	6.6	94.6	91.7	1.8	1.5	0.4	0.4	1.8	4.8	29.1	24.7	93.8	6.2
Center Line	8,531	8,257	-3.2	92.8	81.3	3	11.9	1	2.4	1.5	1.7	21.8	21.4	92.7	7.3
Chesterfield Twp.	37,405	43,381	16	92	89.5	2.9	5.2	0.8	0.9	2.5	2.4	29.8	26.1	91.5	8.5
Clinton Twp.	95,648	96,796	1.2	90	80.6	4.6	12.9	1.7	1.8	1.7	2.4	22.4	20.9	92.8	7.2
Eastpointe	34,077	32,442	-4.8	91.2	64.4	4.7	29.3	0.9	1.1	1.3	2.1	24.5	25.7	91	9
Fraser	15,297	14,480	-5.3	95.6	90.5	0.9	3.9	0.9	1.5	1.3	2.1	24.2	21.4	94.7	5.3
Harrison Twp.	24,461	24,587	0.5	93.6	87.4	2.4	7.4	0.6	0.7	1.5	2.6	21.9	19.2	88.3	11.7
Lenox Twp.	8,433	10,470	24.2	77.4	78.3	16.4	14.4	0.2	0.5	2.8	3.8	24.8	24.7	91.8	8.2
Macomb Twp.	50,478	79,580	57.7	95	89.1	0.8	3.9	1.4	3.1	1.5	2.3	30.2	29.1	96.4	3.6
Memphis	1,129	1,183	4.8	96.4	96	0.7	0.7	0.5	0	1.2	2.1	26.1	24.3	92.2	7.8
Mount Clemens	17,312	16,314	-5.8	74.5	68.3	19.5	24.5	0.5	0.5	2.3	2.9	21.6	20.6	88.6	11.4
New Baltimore	7,405	12,084	63.2	96	92.9	0.5	2.7	0.5	0.9	1.3	1.8	25.4	28.8	93.5	6.5
New Haven	3,071	4,642	51.2	73.1	73.4	18.6	16.7	0	0.5	3.8	4.8	32.3	33	91.6	8.4
Ray Twp.	3,740	3,739	0	97	96.4	0.2	0.4	0.4	0.7	1.2	1.7	25.7	21.6	94.7	5.3
Richmond	4,897	5,735	17.1	92.7	92.4	0.2	1	0.8	0.2	4.7	4.6	24.2	23.8	90.3	9.7
Richmond Twp.	3,416	3,665	7.3	96.3	95.7	1	0.9	0.2	0.1	1.1	1.8	28.2	24.5	95.3	4.7
Romeo	3,721	3,596	-3.4	90.6	87.6	4.3	3.7	0.4	0.4	2.7	5.7	26.1	23.5	90.5	9.5
Roseville	48,129	47,299	-1.7	92.4	81.8	2.6	11.7	1.6	1.6	1.5	2	23.1	23	92	8
Shelby Twp.	65,159	73,804	13.3	93.8	89.4	0.8	3.1	2.1	3.3	1.7	2.4	24.9	22.7	93.4	6.6
St. Clair Shores	63,096	59,715	-5.4	96	91.4	0.7	3.9	0.8	1	1.2	1.7	20.2	19	93.4	6.6
Sterling Heights	124,471	129,699	4.2	89.8	83.8	1.3	5.1	4.9	6.7	1.3	1.9	24.1	21.7	94.8	5.2
Utica	4,577	4,757	3.9	92.5	88.5	0.9	1.9	2.6	3.5	2.1	3.8	21.7	19.9	90.1	9.9
Warren	138,247	134,056	-3	90.4	77.1	2.7	13.4	3.1	4.6	1.4	2.1	22.9	22.7	92.2	7.8
Washington Twp.	19,080	25,139	31.8	95.5	92.3	0.5	1.5	0.6	1	2.4	3.9	26.6	25	93.8	6.2

Demographic Report



		21 Mile And Romeo Plank 1 mile radius	21 Mile And Romeo Plank 3 mile radius	21 Mile And Romeo Plank 5 mile radius
POPULATION	2007 Estimated Population	16,079	92,505	212,483
	2012 Projected Population	18,509	104,527	230,605
	2000 Census Population	12,167	73,243	183,420
	1990 Census Population	7,633	40,655	135,679
	Growth 2000-2007	32.15%	26.30%	15.84%
	Growth 2007-2012	15.11%	13.00%	8.53%
	2007 Estimated Median Age	33.47	36.56	37.16
	2007 Estimated Average Age	33.40	36.97	37.22
HOUSEHOLDS	2007 Estimated Households	5,276	35,588	81,506
	2012 Projected Households	6,074	40,222	88,764
	2000 Census Households	3,945	28,010	69,471
	1990 Census Households	2,343	14,510	48,253
	Growth 2000-2007	33.73%	27.05%	17.32%
	Growth 2007-2012	15.13%	13.02%	8.90%
	2007 Est. Average Household Size	2.97	2.54	2.57
INCOME	2007 Est. Median Household Income	\$81,904	\$69,609	\$67,028
	2012 Prj. Median Household Income	\$86,787	\$74,121	\$71,359
	2000 Cen. Median Household Income	\$72,001	\$60,629	\$59,456
	1990 Cen. Median Household Income	\$48,577	\$44,292	\$42,724
	2007 Est. Average Household Income	\$88,222	\$80,933	\$78,952
	2007 Estimated Per Capita Income	\$29,746	\$31,570	\$30,589
HOUSING	2007 Estimated Housing Units	5,539	37,566	85,401
	2007 Estimated Occupied Units	5,276 (95.3%)	35,588 (94.7%)	81,506 (95.4%)
	2007 Estimated Vacant Units	263 (4.7%)	1,978 (5.3%)	3,895 (4.6%)
	2007 Est. Owner Occupied Units	5,006 (90.4%)	28,727 (76.5%)	66,681 (78.1%)
	2007 Est. Renter Occupied Units	270 (4.9%)	6,860 (18.3%)	14,825 (17.4%)
	2007 Est. Median Housing Value	\$234,285	\$220,350	\$203,477
	2007 Est. Average Housing Value	\$233,112	\$223,875	\$214,828

Demographic Report



	21 Mile And Romeo Plank 1 mile radius	21 Mile And Romeo Plank 3 mile radius	21 Mile And Romeo Plank 5 mile radius	
INCOME	2007 Estimated Households	5,276	35,588	81,506
	- Income Less than \$15,000	206 (3.9%)	2,286 (6.4%)	6,359 (7.8%)
	- Income \$15,000 to \$24,999	216 (4.1%)	2,586 (7.3%)	5,912 (7.3%)
	- Income \$25,000 to \$34,999	290 (5.5%)	2,885 (8.1%)	6,805 (8.3%)
	- Income \$35,000 to \$49,999	581 (11.0%)	4,538 (12.8%)	10,539 (12.9%)
	- Income \$50,000 to \$74,999	1,037 (19.7%)	6,905 (19.4%)	15,969 (19.6%)
	- Income \$75,000 to \$99,999	1,095 (20.8%)	5,854 (16.4%)	13,340 (16.4%)
	- Income \$100,000 to \$149,999	1,342 (25.4%)	7,318 (20.6%)	15,923 (19.5%)
	- Income \$150,000 to \$249,999	475 (9.0%)	2,794 (7.9%)	5,513 (6.8%)
	- Income \$250,000 to \$499,999	32 (.6%)	371 (1.0%)	905 (1.1%)
	- Income \$500,000 and over	3 (.1%)	52 (.1%)	241 (.3%)
	2007 Est. Average Household Income	\$88,222	\$80,933	\$78,952
	2012 Prj. Average Household Income	\$94,745	\$86,483	\$83,786
	2000 Cen. Avg. Household Income	\$76,249	\$71,846	\$70,511
	1990 Cen. Avg. Household Income	\$53,762	\$49,391	\$50,039
HOUSEHOLD SIZE	2007 Estimated Households by Household Size	5,276	35,588	81,506
	- 1 Person Household	740 (14.0%)	9,201 (25.9%)	20,562 (25.2%)
	- 2 Person Household	1,537 (29.1%)	11,400 (32.0%)	25,571 (31.4%)
	- 3 Person Household	1,068 (20.2%)	5,797 (16.3%)	14,103 (17.3%)
	- 4 Person Household	1,234 (23.4%)	5,922 (16.6%)	13,607 (16.7%)
	- 5 Person Household	514 (9.7%)	2,430 (6.8%)	5,673 (7.0%)
	- 6 Person Household	138 (2.6%)	616 (1.7%)	1,531 (1.9%)
	- 7 or More Person Household	45 (.9%)	223 (.6%)	460 (.6%)
	2007 Est. Average Household Size	2.97	2.54	2.57
VEHICLES	2007 Estimated Households by Number of Vehicles	5,276	35,588	81,506
	- Households with No Vehicles	118 (2.2%)	1,460 (4.1%)	4,243 (5.2%)
	- Households with 1 Vehicle	924 (17.5%)	10,886 (30.6%)	23,678 (29.1%)
	- Households with 2 Vehicles	2,926 (55.5%)	16,713 (47.0%)	37,868 (46.5%)
	- Households with 3 Vehicles	910 (17.2%)	4,748 (13.3%)	11,293 (13.9%)
	- Households with 4 Vehicles	270 (5.1%)	1,327 (3.7%)	3,441 (4.2%)
	- Households with 5+ Vehicles	127 (2.4%)	454 (1.3%)	983 (1.2%)
	2007 Est. Average Number of Vehicles	2.14	1.86	1.87

Demographic Report

	21 Mile And Romeo Plank 1 mile radius	21 Mile And Romeo Plank 3 mile radius	21 Mile And Romeo Plank 5 mile radius
RACE & ETHNICITY	2007 Estimated Population by Race and Origin		
	16,079	92,505	212,483
	- White Population	14,753 (91.8%)	83,832 (90.6%)
	- Black Population	531 (3.3%)	3,703 (4.0%)
	- Asian Population	472 (2.9%)	2,443 (2.6%)
	- Pacific Islander Population	3 (.0%)	16 (.0%)
	- American Indian and Alaska Native	26 (.2%)	211 (.2%)
	- Other Race Population	77 (.5%)	535 (.6%)
	- Two or More Races Population	216 (1.3%)	1,765 (1.9%)
AGE	- Hispanic Population	291 (1.8%)	2,259 (2.4%)
	- White Non-Hispanic Population	14,738 (91.7%)	83,756 (90.5%)
	212,483	92,505	212,483
	2007 Estimated Population by Age	16,079	92,505
	- Aged 0 to 4 Years	1,333 (8.3%)	6,504 (7.0%)
	- Aged 5 to 9 Years	1,275 (7.9%)	6,299 (6.8%)
	- Aged 10 to 14 Years	1,341 (8.3%)	6,596 (7.1%)
	- Aged 15 to 17 Years	774 (4.8%)	3,838 (4.1%)
	- Aged 18 to 20 Years	593 (3.7%)	3,261 (3.5%)
EDUCATION	- Aged 21 to 24 Years	822 (5.1%)	4,392 (4.7%)
	- Aged 25 to 34 Years	2,272 (14.1%)	13,116 (14.2%)
	- Aged 35 to 44 Years	2,668 (16.6%)	14,914 (16.1%)
	- Aged 45 to 49 Years	1,348 (8.4%)	7,299 (7.9%)
	- Aged 50 to 54 Years	1,154 (7.2%)	6,244 (6.7%)
	- Aged 55 to 59 Years	906 (5.6%)	5,235 (5.7%)
	- Aged 60 to 64 Years	608 (3.8%)	3,913 (4.2%)
	- Aged 65 to 74 Years	585 (3.6%)	5,166 (5.6%)
	- Aged 75 to 84 Years	297 (1.8%)	4,087 (4.4%)
EDUCATION	- Aged 85 Years and Older	104 (.6%)	1,642 (1.8%)
	2007 Estimated Median Age	33.47	36.56
	2007 Estimated Average Age	33.40	36.97
	37.16	37.22	37.22
	2007 Estimated Population Over 25 by Educational Attainment	9,941	61,616
	- Less Than 9th Grade	262 (2.6%)	2,357 (3.8%)
	- High School - No Diploma	671 (6.7%)	5,547 (9.0%)
	- High School Diploma	2,657 (26.7%)	18,206 (29.5%)
	- Some College	2,707 (27.2%)	16,004 (26.0%)
	- Associate Degree	1,096 (11.0%)	5,570 (9.0%)
	- Bachelors Degree	1,729 (17.4%)	9,301 (15.1%)
	- Masters Degree	655 (6.6%)	3,559 (5.8%)
	- Professional Degree	149 (1.5%)	801 (1.3%)
	- Doctoral Degree	15 (.2%)	270 (.4%)

Demographic Report



		21 Mile And Romeo Plank 1 mile radius	21 Mile And Romeo Plank 3 mile radius	21 Mile And Romeo Plank 5 mile radius
HOUSING VALUE	2007 Estimated Owner Occupied Units by Housing Value	5,006	28,727	66,681
	- Valued Less than \$20,000	286 (5.7%)	1,127 (3.9%)	2,479 (3.7%)
	- Valued \$20,000-\$39,999	153 (3.1%)	970 (3.4%)	2,111 (3.2%)
	- Valued \$40,000-\$59,999	17 (.3%)	490 (1.7%)	1,624 (2.4%)
	- Valued \$60,000-\$79,999	4 (.1%)	510 (1.8%)	1,752 (2.6%)
	- Valued \$80,000-\$99,999	25 (.5%)	560 (1.9%)	1,759 (2.6%)
	- Valued \$100,000-\$149,999	260 (5.2%)	2,610 (9.1%)	8,085 (12.1%)
	- Valued \$150,000-\$199,999	946 (18.9%)	5,628 (19.6%)	14,562 (21.8%)
	- Valued \$200,000-\$299,999	2,286 (45.7%)	11,223 (39.1%)	22,886 (34.3%)
	- Valued \$300,000-\$399,999	830 (16.6%)	4,590 (16.0%)	8,414 (12.6%)
	- Valued \$400,000-\$499,999	163 (3.3%)	770 (2.7%)	1,988 (3.0%)
	- Valued \$500,000-\$749,999	36 (.7%)	146 (.5%)	747 (1.1%)
	- Valued \$750,000-\$999,999	0	26 (.1%)	145 (.2%)
	- Valued More than \$1,000,000	0	77 (.3%)	129 (.2%)
	2007 Est. Median Housing Value	\$234,285	\$220,350	\$203,477
	2007 Est. Average Housing Value	\$233,112	\$223,875	\$214,828
HOUSING TYPE	2007 Estimated Housing Units by Housing Type	5,539	37,566	85,401
	- 1 Unit Detached	4,248 (76.7%)	20,337 (54.1%)	52,316 (61.3%)
	- 1 Unit Attached	371 (6.7%)	5,838 (15.5%)	9,681 (11.3%)
	- 2 Units	0	83 (.2%)	725 (.8%)
	- 3-19 Units	192 (3.5%)	5,116 (13.6%)	10,001 (11.7%)
	- 20-49 Units	59 (1.1%)	1,531 (4.1%)	2,141 (2.5%)
	- 50+ Units	47 (.8%)	1,403 (3.7%)	2,785 (3.3%)
	- Mobile Home	622 (11.2%)	3,257 (8.7%)	7,751 (9.1%)
	- Boat, RV, Van or Other	0	0	0
UNIT BUILT	2007 Estimated Housing Units by Year Structure Built	5,539	37,566	85,401
	- Structure Built After 1999	1,914 (34.6%)	11,073 (29.5%)	18,628 (21.8%)
	- Structure Built 1995 to 1998	953 (17.2%)	6,869 (18.3%)	10,775 (12.6%)
	- Structure Built 1990 to 1994	531 (9.6%)	5,363 (14.3%)	9,363 (11.0%)
	- Structure Built 1980 to 1989	1,165 (21.0%)	8,448 (22.5%)	16,375 (19.2%)
	- Structure Built 1970 to 1979	794 (14.3%)	4,240 (11.3%)	15,056 (17.6%)
	- Structure Built 1960 to 1969	37 (.7%)	621 (1.7%)	5,771 (6.8%)
	- Structure Built 1950 to 1959	83 (1.5%)	501 (1.3%)	5,080 (5.9%)
	- Structure Built 1940 to 1949	26 (.5%)	140 (.4%)	1,367 (1.6%)
	- Structure Built Before 1939	35 (.6%)	310 (.8%)	2,987 (3.5%)
	2007 Est. Median Year Structure Built	1995	1994	1988

Demographic Report



		21 Mile And Romeo Plank 1 mile radius	21 Mile And Romeo Plank 3 mile radius	21 Mile And Romeo Plank 5 mile radius
SEX	2007 Estimated Population by Sex	16,079	92,505	212,483
	- Male	8,127 (50.5%)	45,698 (49.4%)	104,643 (49.2%)
	- Female	7,952 (49.5%)	46,807 (50.6%)	107,840 (50.8%)
MARITAL STATUS	2007 Estimated Population over 15 by Marital Status	12,130	73,107	168,955
	- Males Never Married	1,529 (12.6%)	9,133 (12.5%)	21,909 (13.0%)
	- Males Married	4,216 (34.8%)	23,422 (32.0%)	52,898 (31.3%)
	- Males Widowed	47 (.4%)	667 (.9%)	1,618 (1.0%)
	- Males Divorced	296 (2.4%)	2,449 (3.3%)	5,767 (3.4%)
	- Females Never Married	1,169 (9.6%)	7,388 (10.1%)	18,206 (10.8%)
	- Females Married	4,351 (35.9%)	23,318 (31.9%)	52,366 (31.0%)
	- Females Widowed	195 (1.6%)	3,435 (4.7%)	7,945 (4.7%)
	- Females Divorced	328 (2.7%)	3,295 (4.5%)	8,246 (4.9%)
GQ	2007 Estimated Population in Group Quarters	4	1,663	2,646
	- Institutional Group Quarters	0	1,609 (96.8%)	2,177 (82.3%)
	- Non-Institutional Group Quarters	4 (100%)	53 (3.2%)	469 (17.7%)
FAMILY INCOME	2007 Estimated Families by Income	4,393	25,059	58,334
	- Family Income Less than \$15,000	101 (2.3%)	557 (2.2%)	1,877 (3.2%)
	- Family Income \$15,000 to \$24,999	141 (3.2%)	990 (4.0%)	2,524 (4.3%)
	- Family Income \$25,000 to \$34,999	169 (3.8%)	1,314 (5.2%)	3,311 (5.7%)
	- Family Income \$35,000 to \$49,999	390 (8.9%)	2,622 (10.5%)	6,074 (10.4%)
	- Family Income \$50,000 to \$74,999	846 (19.3%)	5,048 (20.1%)	12,119 (20.8%)
	- Family Income \$75,000 to \$99,999	1,003 (22.8%)	4,897 (19.5%)	11,558 (19.8%)
	- Family Income \$100,000 to \$149,999	1,283 (29.2%)	6,677 (26.6%)	14,718 (25.2%)
	- Family Income \$150,000 to \$249,999	428 (9.7%)	2,582 (10.3%)	5,126 (8.8%)
	- Family Income \$250,000 to \$499,999	31 (.7%)	331 (1.3%)	812 (1.4%)
	- Family Income Over \$500,000	1 (.0%)	41 (.2%)	215 (.4%)
	2007 Est. Median Family Income	\$88,511	\$84,878	\$81,766
2007 Est. Average Family Income	\$91,529	\$88,859	\$87,217	
MOVED IN	2007 Estimated Occupied Housing Units by Year Occ. Moved In	5,276	35,588	81,506
	- Moved In Less Than 1 Year Ago	3,167 (60.0%)	21,585 (60.7%)	44,213 (54.2%)
	- Moved In 2 to 5 Years Ago	960 (18.2%)	6,414 (18.0%)	13,978 (17.1%)
	- Moved In 6 to 10 Years Ago	429 (8.1%)	3,355 (9.4%)	8,156 (10.0%)
	- Moved In 11 to 20 Years Ago	531 (10.1%)	3,167 (8.9%)	8,777 (10.8%)
	- Moved In 21 to 30 Years Ago	165 (3.1%)	812 (2.3%)	4,303 (5.3%)
	- Moved In Over 31 Years Ago	23 (.4%)	256 (.7%)	2,080 (2.6%)

Prepared On: 4/30/2008 11:11:27 AM

Page 5 of 9

Demographic Report

		21 Mile And Romeo Plank 1 mile radius	21 Mile And Romeo Plank 3 mile radius	21 Mile And Romeo Plank 5 mile radius
OCCUPATION	2007 Estimated Employed Population by Occupation	8,558	47,012	109,928
	- Management	670 (7.8%)	4,552 (9.7%)	10,519 (9.6%)
	- Business, and Financial Operations	484 (5.7%)	2,670 (5.7%)	5,582 (5.1%)
	- Professional and Related	1,679 (19.6%)	8,231 (17.5%)	18,203 (16.6%)
	- Sales	1,085 (12.7%)	5,955 (12.7%)	13,003 (11.8%)
	- Office Support	1,271 (14.9%)	7,366 (15.7%)	18,331 (16.7%)
	- Service	795 (9.3%)	4,533 (9.6%)	11,209 (10.2%)
	- Health Care Support	510 (6.0%)	2,798 (6.0%)	6,662 (6.1%)
	- Farming, Fishing, and Forestry	30 (.4%)	80 (.2%)	168 (.2%)
	- Construction, Extraction, and Maintenance	738 (8.6%)	3,992 (8.5%)	9,313 (8.5%)
	- Production, Transportation, and Material Moving	1,296 (15.1%)	6,834 (14.5%)	16,936 (15.4%)
TRANSPORTATION	2007 Estimated Employed Population Over 16 by Primary Transportation to Work	8,444	46,108	107,771
	- Car, Truck, Van or Motorcycle to Work	7,751 (91.8%)	42,168 (91.5%)	97,585 (90.5%)
	- Carpooled	508 (6.0%)	2,796 (6.1%)	6,835 (6.3%)
	- Public Transportation to Work	10 (.1%)	140 (.3%)	476 (.4%)
	- Other Transportation to Work	68 (.8%)	251 (.5%)	1,024 (1.0%)
	- Work at Home	107 (1.3%)	753 (1.6%)	1,850 (1.7%)
TRAVEL TIME	2007 Estimated Employed Population Over 16 by Travel Time to Work	8,444	46,108	107,771
	- Travel Time Less than 15 Min	1,776 (21.0%)	8,861 (19.2%)	23,137 (21.5%)
	- Travel Time 15-29 Min	2,790 (33.0%)	14,934 (32.4%)	35,845 (33.3%)
	- Travel Time 30-44 Min	2,242 (26.6%)	12,225 (26.5%)	27,058 (25.1%)
	- Travel Time 45-59 Min	909 (10.8%)	5,751 (12.5%)	11,798 (10.9%)
	- Travel Time 60+ Min	620 (7.3%)	3,585 (7.8%)	8,081 (7.5%)
	- 2007 Est. Average Travel Time	30.55	31.52	30.35
EMPLOYMENT	Estimated Population Over 16 Years Old by Employment Status	11,863	71,840	165,842
	- Civilian Males	4,926 (41.5%)	26,402 (36.8%)	60,922 (36.7%)
	- Civilian Females	3,632 (30.6%)	20,609 (28.7%)	49,006 (29.5%)
	- Armed Forces Male	22 (.2%)	37 (.1%)	69 (.0%)
	- Armed Forces Female	0	14 (.0%)	35 (.0%)
	- Unemployed Males	127 (1.1%)	860 (1.2%)	2,417 (1.5%)
	- Unemployed Female	119 (1.0%)	692 (1.0%)	1,972 (1.2%)
	- Not in the Labor Force Male	883 (7.4%)	7,746 (10.8%)	17,189 (10.4%)
	- Not in the Labor Force Female	2,155 (18.2%)	15,479 (21.5%)	34,231 (20.6%)

Demographic Report

		21 Mile And Romeo Plank 1 mile radius	21 Mile And Romeo Plank 3 mile radius	21 Mile And Romeo Plank 5 mile radius
INDUSTRY	2007 Estimated Employed Population by Industry Employeeed In	8,558	47,012	109,928
	- Agriculture, Forestry, Fishing, Hunting and Mining	16 (.2%)	47 (.1%)	155 (.1%)
	- Construction	571 (6.7%)	2,999 (6.4%)	6,924 (6.3%)
	- Manufacturing	1,938 (22.6%)	12,725 (27.1%)	29,658 (27.0%)
	- Wholesale Trade	310 (3.6%)	1,546 (3.3%)	3,696 (3.4%)
	- Retail Trade	1,051 (12.3%)	6,061 (12.9%)	13,747 (12.5%)
	- Transporation, Warehousing and Utilities	201 (2.3%)	1,298 (2.8%)	3,094 (2.8%)
	- Information	143 (1.7%)	861 (1.8%)	2,234 (2.0%)
	- Finance, Insurance and Real Estate	515 (6.0%)	2,945 (6.3%)	6,157 (5.6%)
	- Profesional, Scientific and Technical Services	929 (10.9%)	3,781 (8.0%)	8,437 (7.7%)
	- Management	0	6 (.0%)	17 (.0%)
	- Educational Services	704 (8.2%)	2,829 (6.0%)	6,902 (6.3%)
	- Other Services	938 (11.0%)	5,556 (11.8%)	13,344 (12.1%)
	- Health Care and Social Assistance	851 (9.9%)	4,492 (9.6%)	10,743 (9.8%)
	- Arts, Entertainment and Recreation	122 (1.4%)	551 (1.2%)	1,294 (1.2%)
	- Public Administration	269 (3.1%)	1,314 (2.8%)	3,525 (3.2%)
ORIGIN	2007 Estimated Hispanic Population by Origin	291	2,259	4,494
	- Mexican	194 (66.7%)	1,518 (67.2%)	2,901 (64.6%)
	- Puerto Rican	23 (7.9%)	159 (7.0%)	363 (8.1%)
	- Cuban	11 (3.8%)	67 (3.0%)	139 (3.1%)
	- All Others	63 (21.6%)	515 (22.8%)	1,091 (24.3%)
HISPANIC BY RACE	2007 Estimated Hispanic Population by Race	291	2,259	4,494
	- White	202 (69.4%)	1,563 (69.2%)	3,162 (70.4%)
	- Black	1 (.3%)	26 (1.2%)	62 (1.4%)
	- Am. Indian or Alaska Native	2 (.7%)	39 (1.7%)	86 (1.9%)
	- Asian	0	8 (.4%)	19 (.4%)
	- Native Haw. Or Pac. Islander	0	3 (.1%)	5 (.1%)
	- Other	72 (24.7%)	479 (21.2%)	797 (17.7%)
	- Two or More	13 (4.5%)	141 (6.2%)	362 (8.1%)

Demographic Report

	21 Mile And Romeo Plank 1 mile radius	21 Mile And Romeo Plank 3 mile radius	21 Mile And Romeo Plank 5 mile radius	
ASIAN BY CATEGORY	2007 Estimated Asian Population by Category	472	2,443	4,508
	- Chinese, except Taiwanese	127 (26.9%)	407 (16.7%)	702 (15.6%)
	- Filipino	67 (14.2%)	396 (16.2%)	827 (18.3%)
	- Japanese	9 (1.9%)	55 (2.3%)	107 (2.4%)
	- Asian Indian	132 (28.0%)	832 (34.1%)	1,444 (32.0%)
	- Korean	63 (13.3%)	319 (13.1%)	636 (14.1%)
	- Vietnamese	43 (9.1%)	188 (7.7%)	300 (6.7%)
	- Cambodian	0	25 (1.0%)	41 (.9%)
	- Hmong	5 (1.1%)	31 (1.3%)	142 (3.1%)
	- Laotian	0	27 (1.1%)	54 (1.2%)
	- Thai	3 (.6%)	14 (.6%)	30 (.7%)
	- Other	24 (5.1%)	125 (5.1%)	188 (4.2%)
	- Two or More	0	24 (1.0%)	38 (.8%)
	PRESENCE OF CHILDREN	2007 Estimated Households by Presence of Own Children	5,276	35,588
- Single Male Householder		399 (7.6%)	3,706 (10.4%)	8,613 (10.6%)
- Single Female Householder		341 (6.5%)	5,496 (15.4%)	11,949 (14.7%)
- Married-Couple, own children		2,213 (41.9%)	10,689 (30.0%)	23,881 (29.3%)
- Married-Couple, no own children		1,711 (32.4%)	10,973 (30.8%)	25,039 (30.7%)
- Male Householder, own children		59 (1.1%)	436 (1.2%)	1,119 (1.4%)
- Male Householder, no own children		80 (1.5%)	559 (1.6%)	1,357 (1.7%)
- Female Householder, own children		211 (4.0%)	1,257 (3.5%)	3,834 (4.7%)
- Female Householder, no own children		120 (2.3%)	1,145 (3.2%)	3,104 (3.8%)
- Nonfamily, Male Householder		95 (1.8%)	824 (2.3%)	1,592 (2.0%)
- Nonfamily, Female Householder		47 (.9%)	503 (1.4%)	1,017 (1.2%)
FAMILIES BY POVERTY STATUS	2007 Estimated Families by Poverty Status	4,393	25,059	58,334
	- Income At or Above Poverty Level:	4,424 (100.7%)	24,645 (98.3%)	56,574 (97.0%)
	- Married-Couple, own children	2,246 (51.1%)	10,851 (43.3%)	24,323 (41.7%)
	- Married-Couple, no own children	1,745 (39.7%)	10,664 (42.6%)	24,132 (41.4%)
	- Male Householder, own children	98 (2.2%)	468 (1.9%)	1,147 (2.0%)
	- Male Householder, no own children	39 (.9%)	460 (1.8%)	1,122 (1.9%)
	- Female Householder, own children	206 (4.7%)	1,141 (4.6%)	3,199 (5.5%)
	- Female Hhldr', no own children	90 (2.0%)	1,061 (4.2%)	2,651 (4.5%)
	- Income Below Poverty Level:	77 (1.8%)	486 (1.9%)	1,885 (3.2%)
	- Married-Couple, own children	15 (.3%)	127 (.5%)	304 (.5%)
	- Married-Couple, no own children	11 (.3%)	75 (.3%)	263 (.5%)
	- Male Householder, own children	5 (.1%)	56 (.2%)	150 (.3%)
	- Male Householder, no own children	1 (.0%)	15 (.1%)	62 (.1%)
	- Female Householder, own children	39 (.9%)	186 (.7%)	997 (1.7%)
	- Female Hhldr', no own children	6 (.1%)	27 (.1%)	109 (.2%)

Demographic Report

Location	Longitude	Latitude
1. 21 Mile And Romeo Plank - 1 mile radius	-82.936437	42.642723
2. 21 Mile And Romeo Plank - 3 mile radius	-82.936437	42.642723
3. 21 Mile And Romeo Plank - 5 mile radius	-82.936437	42.642723

